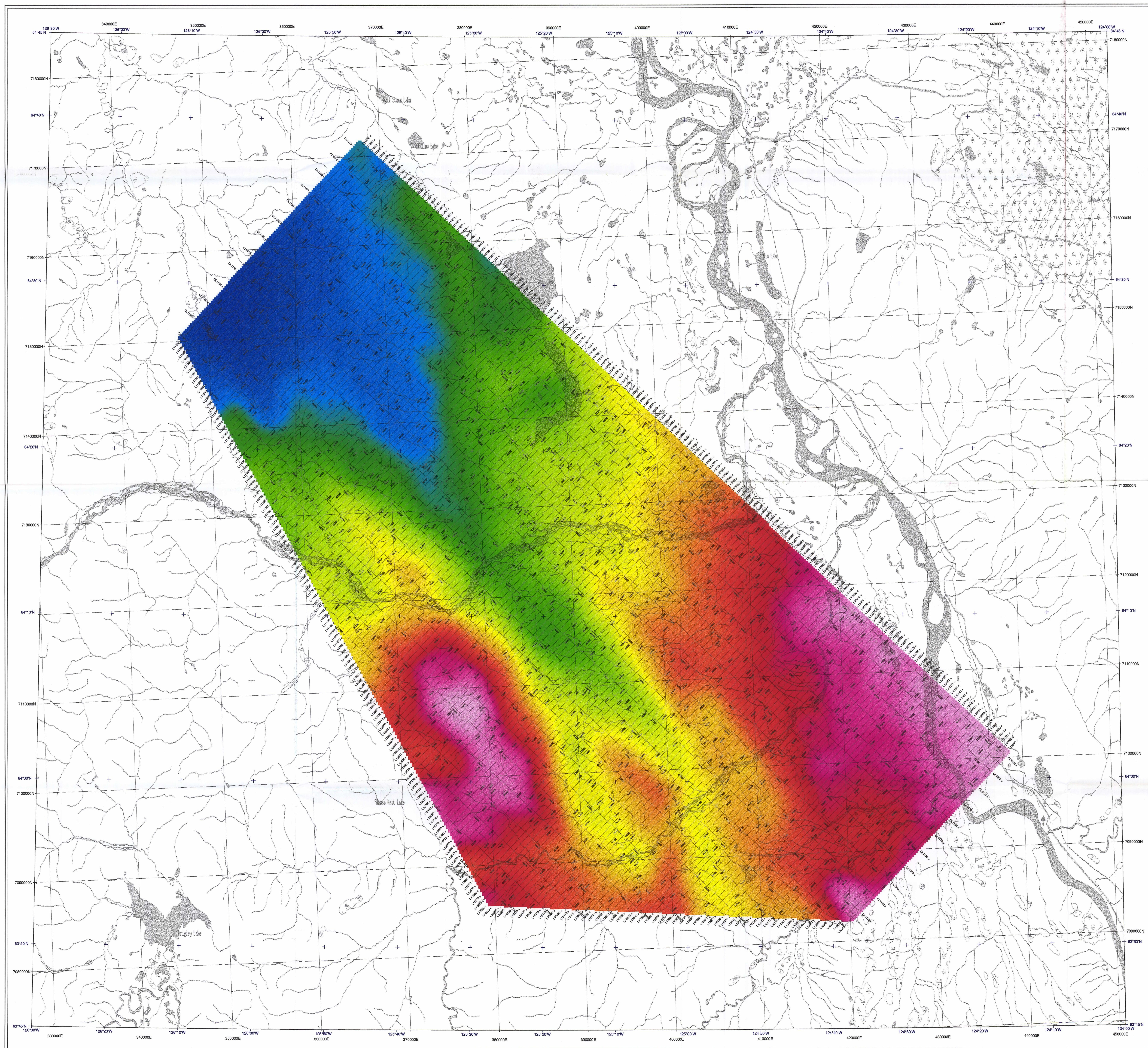




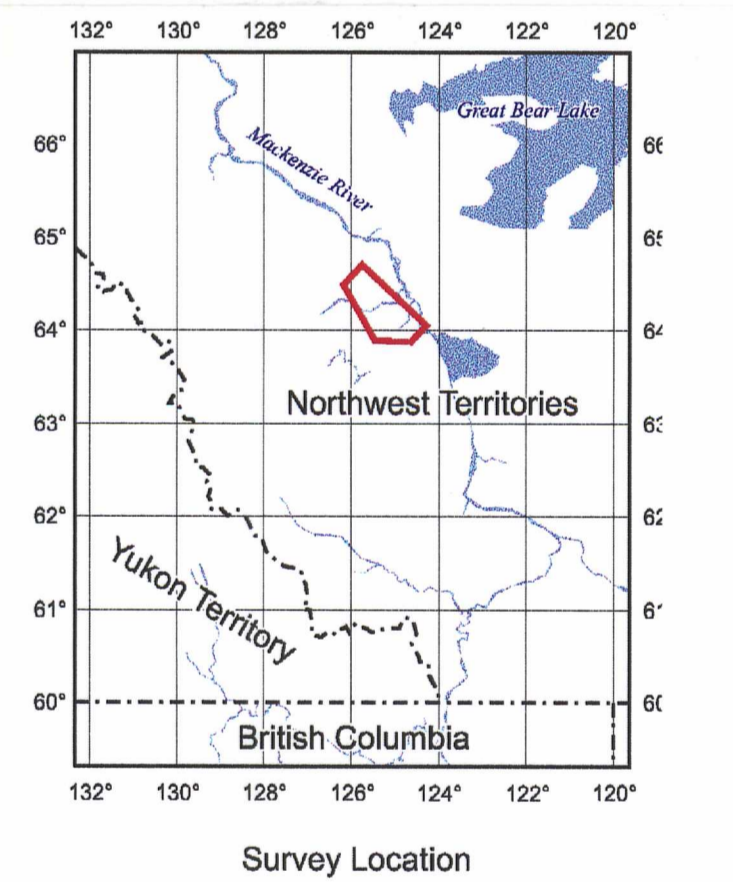
High Resolution Airborne Gravity Survey

Central Mackenzie Area,

Bouguer Gravity (mG)
(Density 2.3 g/cm³)



Flight Lines
L1410
Fiducial
Line number and direction



Survey Location

Survey and Processing Specifications

| | |
|---|------------------------|
| Traverse Line Spacing | |
| Traverse Line Direction | |
| Control Line Spacing | |
| Control Line Direction | |
| Aircraft Altitude | |
| Flying Speed | |
| Gravimeter Sensor | |
| Gravimeter Sensitivity | |
| Gravimeter Sample Rate | |
| Aircraft Positioning | |
| GPS Receiver | NovAtel Miler |
| Aircraft | |
| Directly used for Bouguer and Terrain Corrections | 0% Free @ 3000 m, 100% |
| Gravity Data Spatial Filter (Full Wavelength) | |
| GPS Ground Station 1 (WGS-84) | 64°25' |
| GPS Ground Station 2 (WGS-84) | 64°25' |
| Data Flow | |
| Grid Cell Size | |
| Datum | |
| UTM Zone | |

Scale 1 : 150 000
km 2.5 0 5

Gravity Data Acquired using Geosider Geosurveyor
AIRGrav
Airborne Inertially Referenced Gravimeter

